

ASUS IoT Cloud Console

How to start using AICC

Getting started

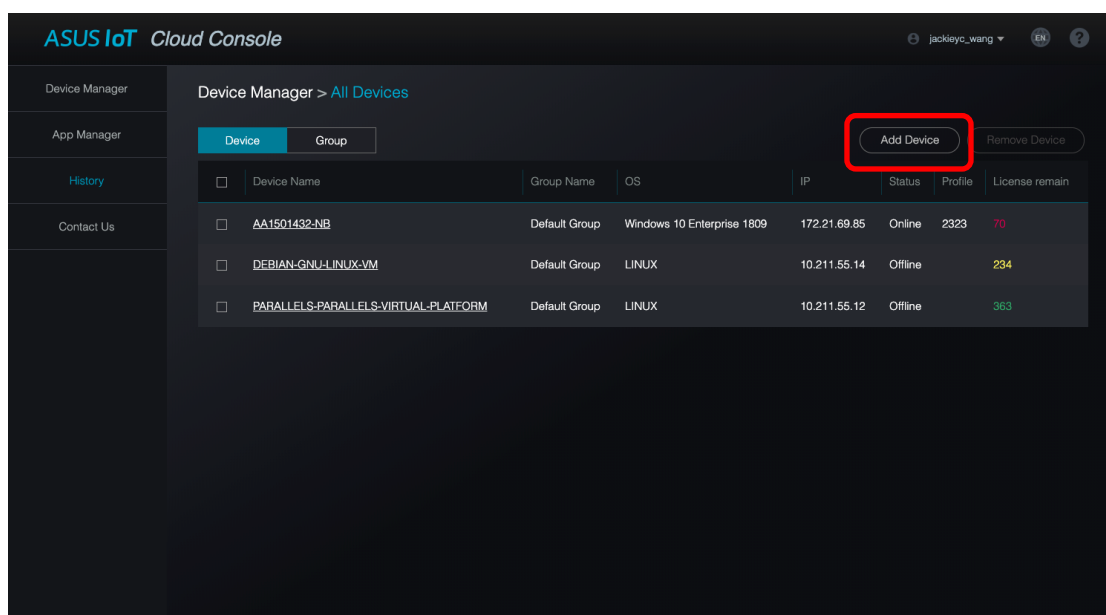
1.1 Introduction to ASUS IoT Cloud Console

With ASUS IoT Cloud Console, you can manage devices and projects with simple steps, know the online status, modify profile settings and deploy applications remotely, any modifications can be synced in real time.

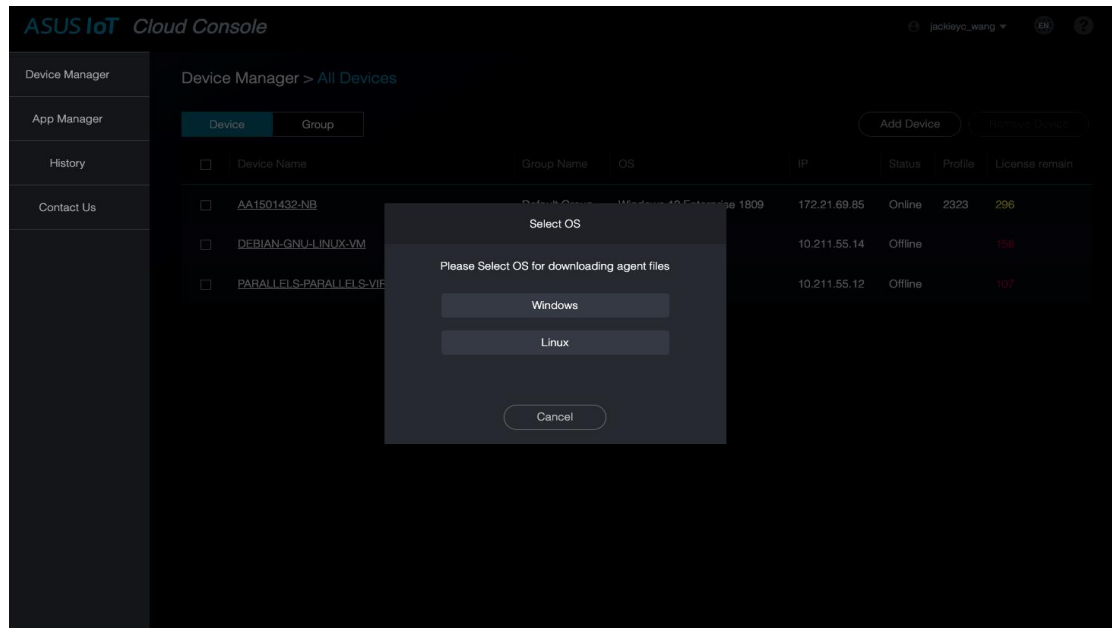
1.2 Quick Start

Before you manage your devices in the ASUS IoT Cloud Console, you should follow the steps below to set up:

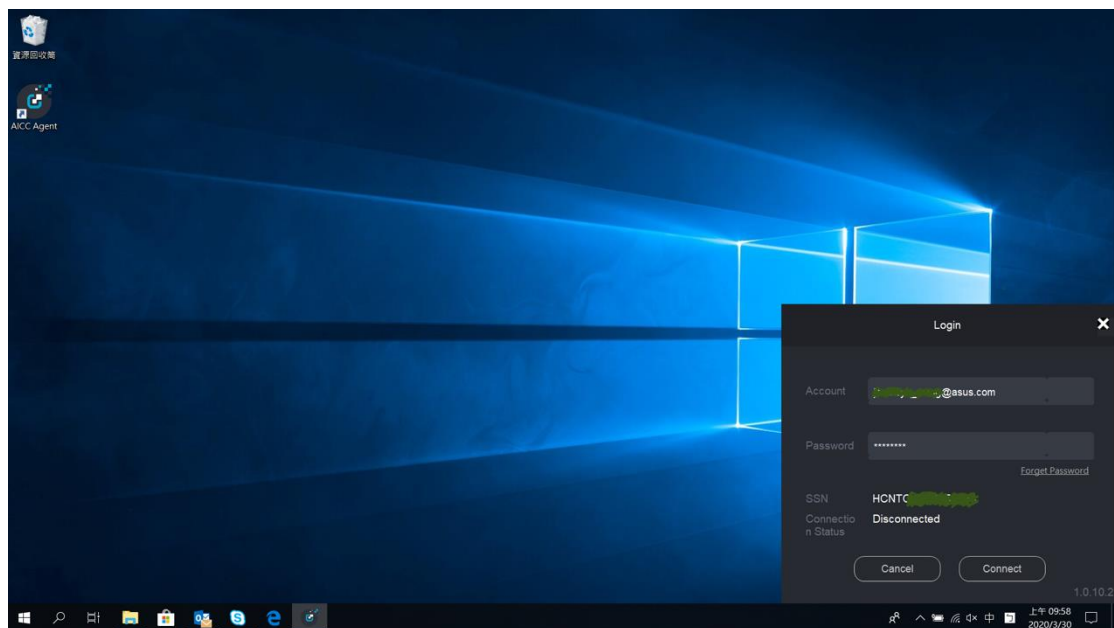
1. Login ASUS IoT Cloud Console (<https://aicc.asus.com/>)
2. Select “**Device Manager**” and Click “**Add Device**” at the top right of the website



3. Select OS for downloading the agent file and install the agent file on the device which you want to manage.



4. Login with the ASUS Account on your device.



5. Few seconds later, the device will be showed in the ASUS IoT Cloud Console.

